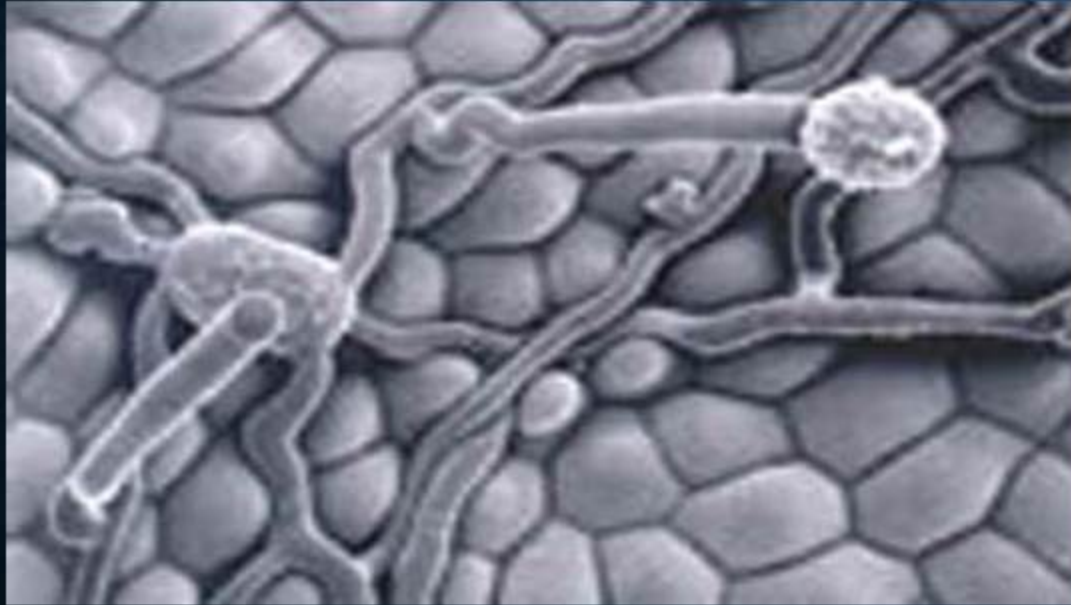


INFECTION PROCESS

- **Infection**, establishment of an organic relationship of the pathogen with susceptible cells of the host.
- Successful infection evident as: symptoms
- Infection is of different types
 - Local infection
 - Systemic infection
 - Latent infection
- Invasion and reproduction are the two concurrent stages that occur during infection as pathogen invade different cells, grow and multiply.

INVASION

Ectoparasite (e.g. powdery mildew)



Endoparasite (e.g. bacterial wilt)

